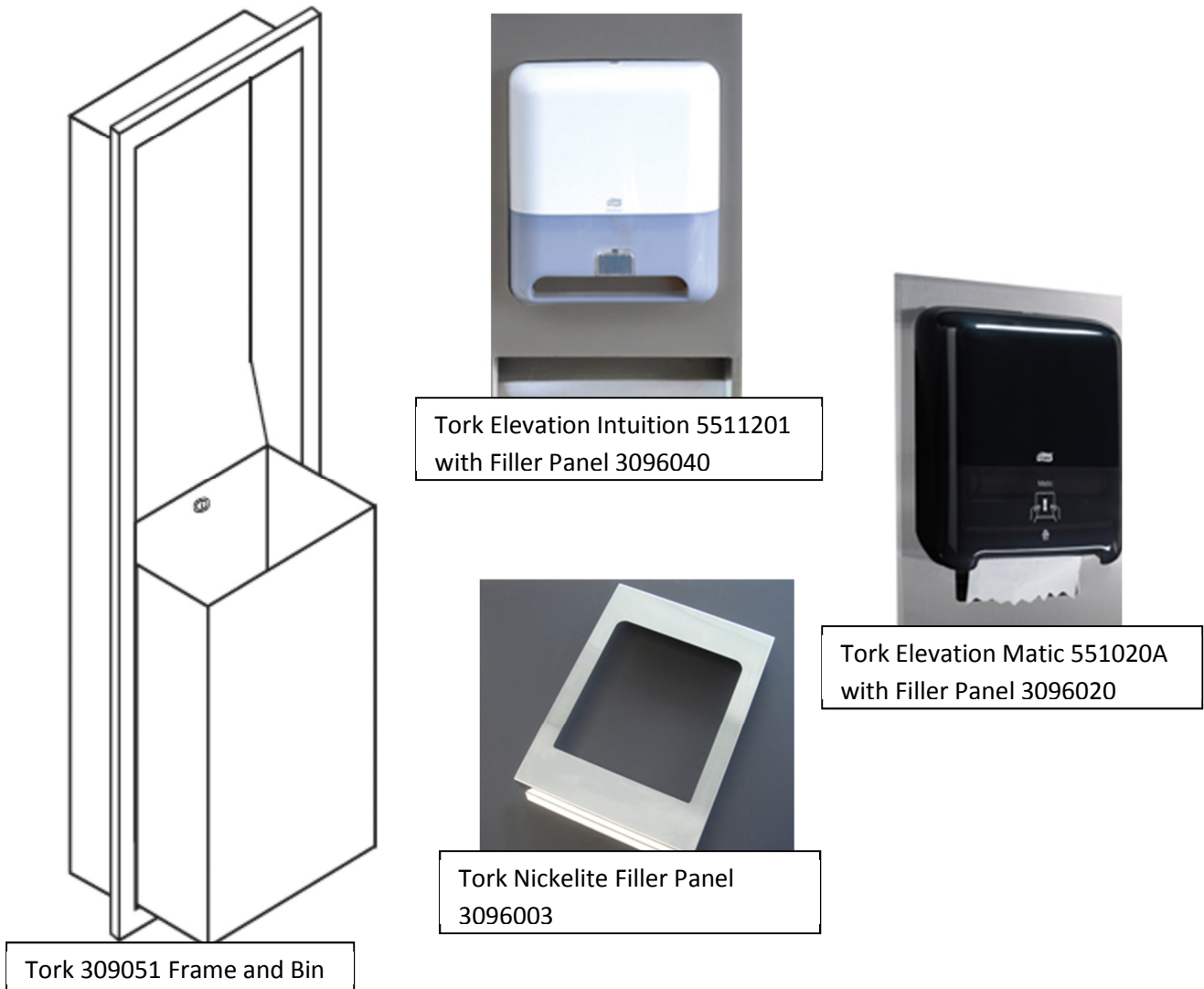


TORK 309051 H1 SYSTEM RECESSED FRAME AND WASTE RECEPTACLE, STAINLESS STEEL



The Tork 309051 provides a sleek, all-in-one stainless steel recessed frame and waste receptacle that works with the Tork hands-free hardwound towel system of your choice. Tork 309051 can be fitted with any H1 system HWRT dispenser – Tork Matic, Tork Elevation Intuition, Tork Nickelite Intuition – and, when combined with the corresponding Tork stainless steel filler panel, provides a complete recessed hands-free towel system.

PRODUCT SPECIFICATIONS:

Dispenser Dimensions: 17 1/8" W, 56" H, 4 1/4" D (435 x 1422 x 108mm)

Rough Wall Opening: 15 3/4" W, 54 3/4" H, 4" min. D (400 x 1391 x 102mm)

Average Mounting Height: 67" (1702 mm) to 74" (1880mm) to top of unit; ADA Height: 60" (1524mm)

SCC Number: 10073286624939

Construction:

Fabricated from type 304 heavy-gauge stainless steel. All welded construction with exposed surfaces having a #4 satin-finish. One-piece, seamless, 22-gauge (0.8mm) flange provided with 1/4" (102mm) return for rigidity.

Waste receptacle is 22-gauge (0.8mm) and secured to cabinet with metal tumbler lock (SCA #9 or Bobrick Cat 74) and is removable for servicing; top and bottom edges hemmed for safe handling.

Capacity:

Waste receptacle is 12-gallons (45.4-L) capacity.

ADA Guide:

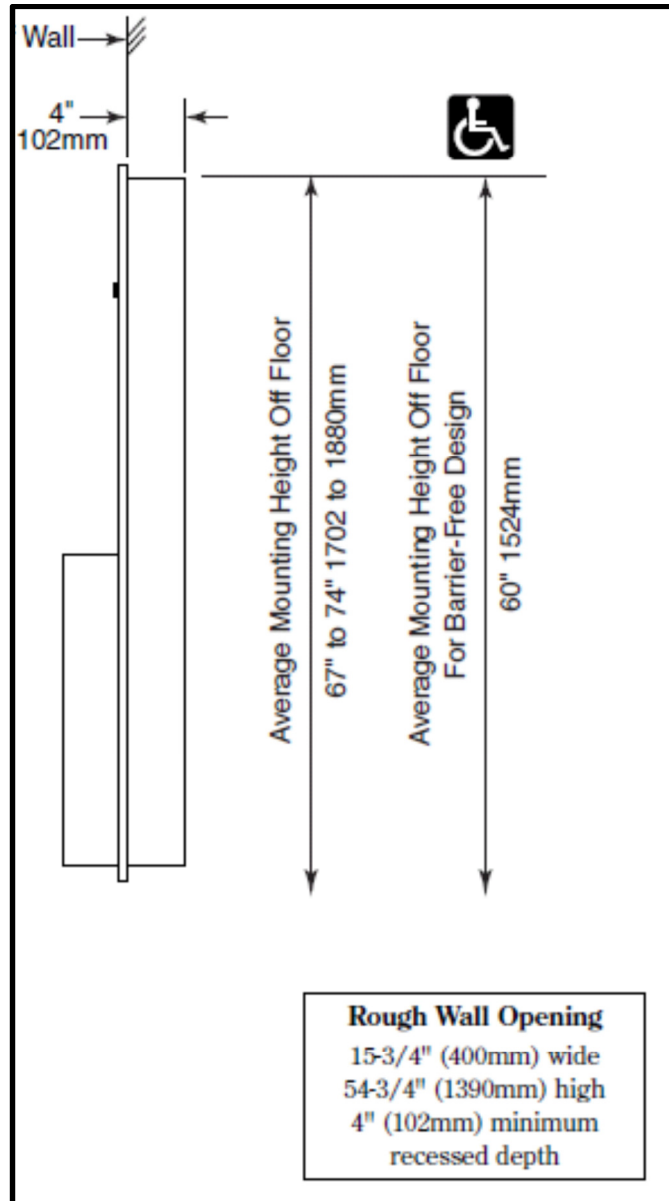
Access to paper towels should be 15" to 48" (381 to 1219mm) above the finish floor to allow forward and side reach by people in wheelchairs. Units should not project more than 4" (102mm) from the wall.

Tork H1 System Product Selection:

Tork 309051 Stainless Steel Frame and Bin will accommodate any Tork H1 System dispenser when used with their corresponding Tork Stainless Steel Filler Panel.

Tork H1 System	Tork H1 Dispenser	Tork SS Filler Panel
H1 Elevation Intuition	5511201, 5511281	3096040
H1 Elevation Matic	551020A, 551028A	3096020
H1 Nickelite	309605, 309606, 309609A	3096003

Tork 309051 Rough Wall Opening and Mounting Height



Where Unsung Heroes Make It Happen™

800.647.2737

NationalEW.com