

Metering Tip Charts

Table 1: Extreme 4 Metering Tips (Provided)						
Metering Tip Color	1 GPM Flow Rate Proportioner			4 GPM Flow Rate Proportioner		
	Oz./gal	ml/L	Ratio : 1	Oz./gal	ml/L	Ratio : 1
Tan	1.25	9.80	102	0.30	2.34	427
Orange	1.70	13.33	75	0.40	3.13	320
Turquoise	2.15	16.67	60	0.50	3.91	256
Royal Blue	2.37	18.52	54	0.56	4.39	228
Charcoal Gray	2.67	20.83	48	0.64	5.00	200
Pink	3.00	23.26	43	0.75	5.88	170
Light Blue	3.90	30.30	33	1.00	7.81	128
Brown	4.55	35.71	28	1.12	8.77	114
Red	5.80	45.45	22	1.50	11.76	85
White	7.00	55.56	18	1.75	13.70	73
Green	7.90	62.50	16	2.00	15.63	64
Blue	9.80	76.92	13	2.50	19.61	51
Yellow	14.80	111.11	9	3.75	39.41	34
Gray	31.60	250.00	4	11.50	90.91	11
No Tip	35.00	277.78	3.6	16.25	125.00	8

INDUCTION RATES BASED ON WATER THIN PRODUCTS (1 cps)
INDUCTION RATES VARY PRODUCT TO PRODUCT. FIELD TESTS ARE RECOMMENDED.

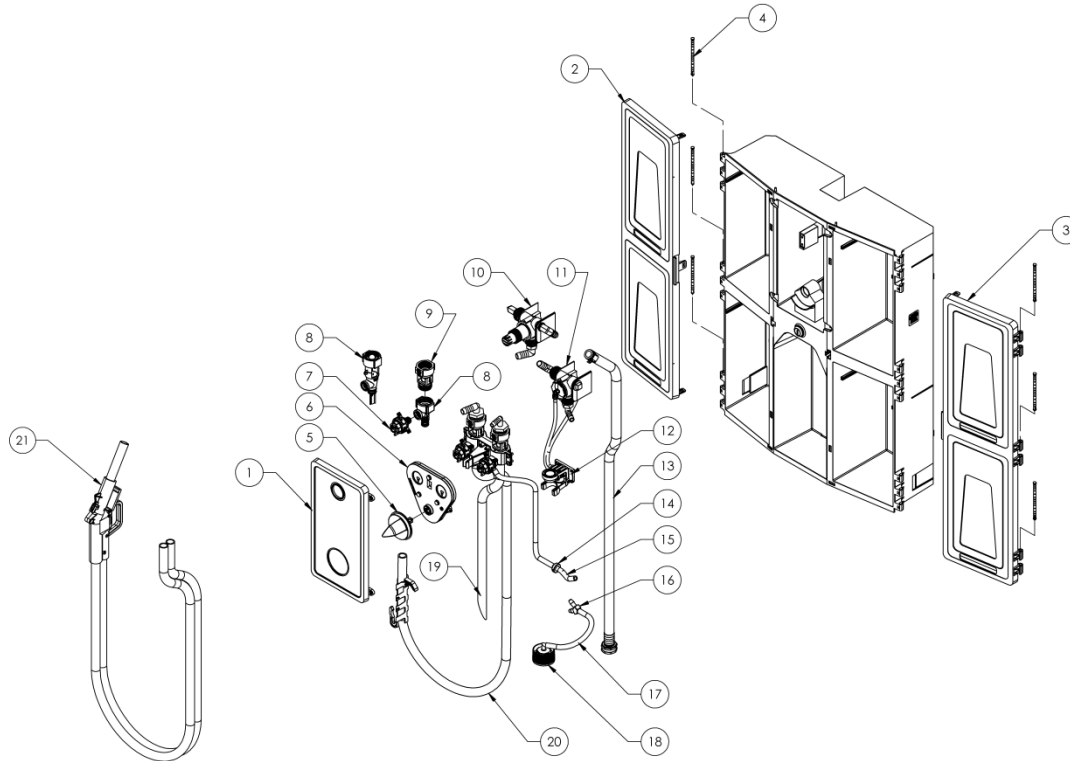
Table 2: Ultra Lean Metering Tips (Not Provided)						
Metering Tip Color	1 GPM Flow Rate Proportioner			4 GPM Flow Rate Proportioner		
	Oz./gal	ml/L	Ratio : 1	Oz./gal	ml/L	Ratio : 1
Copper	0.56	4.38	230	0.16	1.25	806
Pumpkin	0.73	5.70	175	0.20	1.56	625
Burgundy	0.90	7.03	143	0.26	2.03	490
Lime	1.28	10.00	100	0.34	2.66	376

INDUCTION RATES BASED ON WATER THIN PRODUCTS (1 cps)
INDUCTION RATES VARY PRODUCT TO PRODUCT. FIELD TESTS ARE RECOMMENDED.

Troubleshooting

Symptom	Probable Cause	Remedy
Proportioner fails to draw chemical properly.	<ol style="list-style-type: none"> 1. Insufficient water supply pressure. 2. Safelink cap has chemical build-up (if installed). 3. The outlet tubing might be pinched closed. 4. Chemical metering tip is clogged. 5. Mineral deposits are built up in the in the proportioner. 	<ol style="list-style-type: none"> 1. 20 PSI is the minimum allowable pressure. 2. Soak in hot water to clean. 3. Straighten out the tubing to remove the restriction. 4. Remove metering tip from check valve and replace with new one. 5. Soak proportioner in delimer or off the shelf product such as CLR to clean mineral deposits.
“Air Gap” Proportioner is dripping or spraying a mist (fan pattern) of water.	<ol style="list-style-type: none"> 1. Mineral deposits are located on Air Gap nozzle. 	<ol style="list-style-type: none"> 1. Soak nozzle and inlet screen in delimer or off the shelf product such as CLR to clean and remove mineral deposits.
Water valve is not shutting off completely.	<ol style="list-style-type: none"> 1. “Sliding lever” return spring may be missing on Remote Fill gun. 2. “Sliding lever” is not returning all the way down due to interference between the sliding lever and either the chemical supply and/or outlet tubing. 3. Bucket fill outlet hose is catching the bottom edge of the sliding lever during normal usage. 4. Bottle Fill valve will not shutoff. 	<ol style="list-style-type: none"> 1. Remove cover and visually check for sliding lever return spring. Replace if missing. 2. Remove cover and visually check for any tubes rubbing the sliding lever. Routing of chemical supply and outlet tubing must not restrict the movement of the sliding lever. Reroute tubing. 3. Don't pull the bucket fill outlet hose too tight from either side otherwise sliding lever may not return properly. 4. Make sure bottle fill hose is not pressed against the lever.
Water valve is leaking.	<ol style="list-style-type: none"> 1. Barbed nut is too loose. 	<ol style="list-style-type: none"> 1. Shut water supply off first. Hand-tighten the barbed nut. Do not over tighten w/tool.
Threaded connections are leaking water.	<ol style="list-style-type: none"> 1. The connection between the dispenser and water supply line is too loose or rubber washer is missing. 2. Backflow prevention devices and/or proportioners are too loose. 	<ol style="list-style-type: none"> 1. Shut water supply off first. Carefully tighten the female hose coupling on the dispenser to the inlet water supply line. Do not over tighten. 2. Tighten loose connection(s) with tools if necessary. Do not over tighten if using tools.
Selector valve is not selecting the correct chemical	<ol style="list-style-type: none"> 1. The transmission assembly is malfunctioning. 	<ol style="list-style-type: none"> 1. Make sure the transmission is engaged with the selector valves. If problem persists, replace transmission assembly.
Water is leaking in between the two water valves	<ol style="list-style-type: none"> 1. Plastic fitting connecting the water valves has lost its seal. 	<ol style="list-style-type: none"> 1. Remove the plastic fitting and apply silicone grease to both O-rings and reattach to the valves.

Parts list



No.	Part No.	Description
1	14-3-3	Cover plate (Button operated)
1	14-3-2	Cover plate (Remote gun operated)
2	14-2-3	Door – Left side
3	14-2-4	Door – Right side
4	10-47	Hinge Pin
5	66-339-1	Knob
6	83-53-15	Transmission Assembly
7	63-53-12	Selector Assembly
8	61-99-4	1 GPM Action Gap Proportioner
8	61-32-AGP	1 GPM Air Gap Proportioner
8	163CHA-NB	2.5 GPM Action Gap Proportioner
8	61-45-4	2.5 GPM Air Gap Proportioner
8	61-22-4	4 GPM Action Gap Proportioner
8	61-126AG-4	4 GPM Air Gap Proportioner
9	16-30	Action Gap Assembly
10	14-5-2	Push Button Valve Assembly
10	14-6-2	Remote Gun Valve Assembly
11	14-6-1	Bottle Fill Valve Assembly
12	98-58-1	Lever Assembly
13	44-3-6FCOS	6' Black Hose Assembly with Strainer
14	11-72-1	Check Valve (Threaded)
15	100-12-18	7/32" Tubing, 2"
16	66-500-2	Wye Adapter 1/4"
17	100-12-19	7/32" Tubing, 5"
18	C38CR4W.00	SafeLink Cap Assembly
19	66-242-1	Bottle Fill Tube – Action Gap
19	66-242-2	Bottle Fill Tube – Air Gap
20	89-30-GAP	Bucket Fill Tube – Action Gap
20	85-15-29-6	Bucket Fill Tube – Air Gap
21	98-50-3	Remote Gun Assembly

<i>Parts Not Shown</i>	
Part No.	Description
66-21K	Keyset
100-15K-EX4	Metering Tip Kit
10-57-2	Drip Tray
100-16V-15	Tubing & Foot Valve Assembly
61-107-2	Ceramic Weight
98-40-4	Screw & Anchor Kit
100-12-14	7/32" Tubing, 6'

Warranty

Merchandise Returns

No merchandise will be returned for credit without DEMA's written permission. Please contact your dealer for warranty issues.

Product Warranty

DEMA's products are warranted against defective material and workmanship under normal use and service for one year from the date of manufacture. This limited warranty does not apply to any products that have a normal life shorter than one year or failure and damage caused by chemicals, corrosion, physical abuse, or misapplication. Rubber and synthetic rubber parts such as "O"-rings, diaphragms, PVC tubing, and gaskets are considered expendable and are not covered under warranty. This warranty is extended only to the original buyer of DEMA products. If products are altered or repaired without prior approval of DEMA, this warranty is void.

Defective units or parts should be returned to the factory with transportation prepaid. If inspection shows them to be defective, they will be repaired or replaced without charge, F.O.B. factory. DEMA assumes no liability for damages. Return merchandise authorization number must be granted in advance of returned units for repair or replacement (See "Merchandise Returns" above).